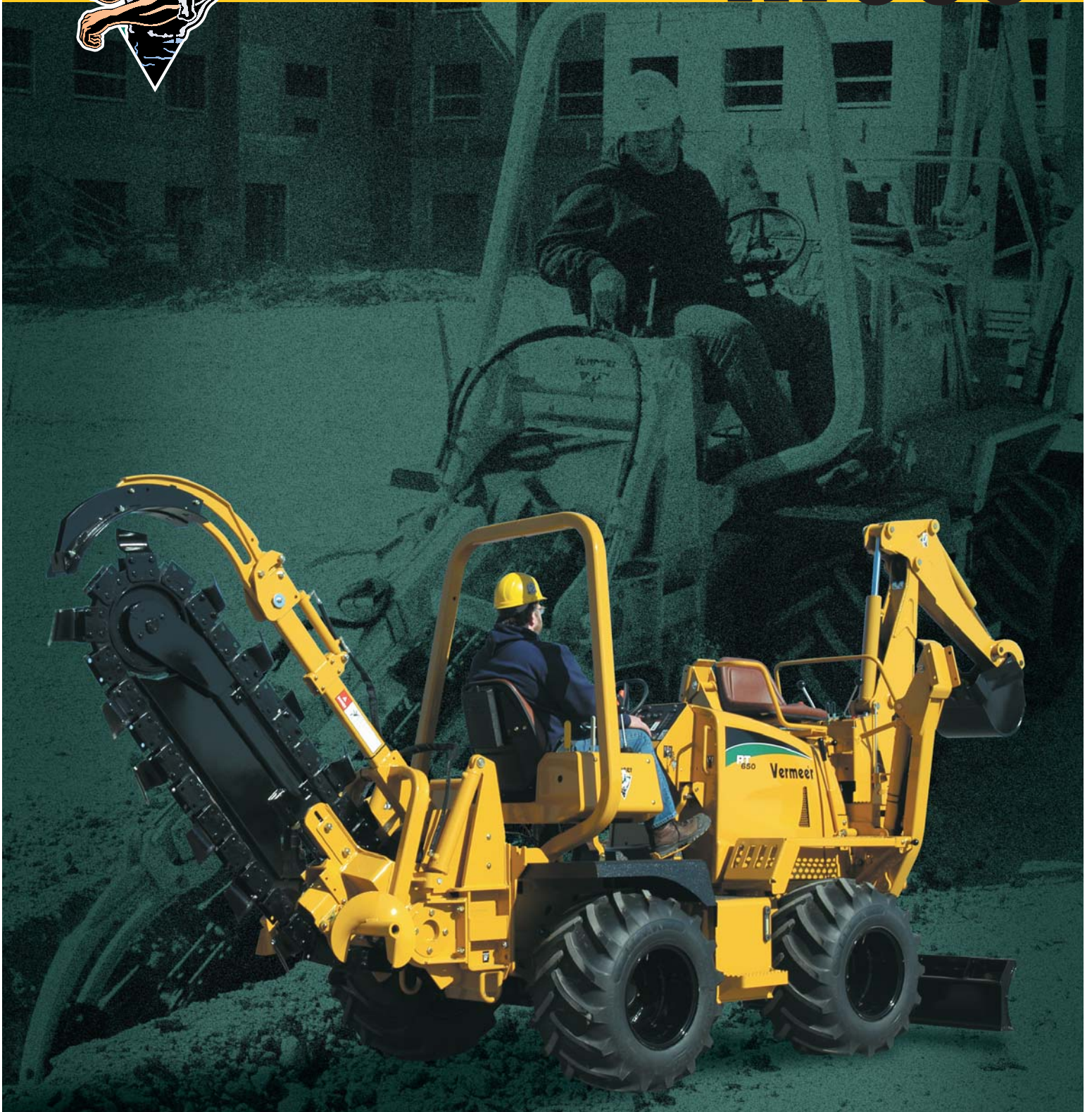


**HYDROSTATIC  
TRENCHER/PLOW**

**Vermeer**



**RT650**





# Vermeer®

## **Packaging Big Power in a Compact Utility Machine.**

Combining operator convenience with versatile tools, the RT650 fully hydrostatic trencher joins the current generation of Vermeer rubber tire units. Based on the proven design of the V5750, the RT650 boasts a stronger, more robust frame that is 3" (8 cm) greater in length with a low center of gravity for improved stability. The Tier II emissionized 76 HP (57 kw) engine with side exhaust is mounted under a thermal-plastic hood that provides greater visibility from the 5-position operators' station and significant sound reduction for backhoe operators. For greater ease of operation and higher productivity, the color-coded attachment controls on the operator station rotate with the operator allowing easy reach at all times.

A 19 gal (72 L) hydraulic fluid tank offers the greatest dwell time in its class which allows for more efficient oil cooling and greater de-aeration time leading to longer component life. To monitor critical machine system conditions, the Murphy shutdown system comes standard with LED dash warning lights for engine oil temperature and pressure, hydraulic oil temperature and air intake restriction. Removable side panel allow easy access to the air filter, filter minder, engine oil dip stick and oil and fuel filters decreasing start-up and maintenance times.

# RT650

## HYDROSTATIC TRENCHER/PLOW

## **Efficient and Ergonomic.**



**Smooth operation.** For added comfort, the operator's station rotates 90 degrees allowing the operator to select five different positions. The attachment controls rotate with the operator providing easy and consistent reach at all times.



**Convenience and accessibility.** Removable shields on both sides of the machine provide easy access to the engine and place the oil dipstick, filters and fill points within easy reach.



**Control at your fingertips.** Standard backhoe remote controls for the start, creep, idle and stop functions permit the operator to reposition the machine without leaving the backhoe operator's station.



**Solid footings.** A low fender design maximizes operator comfort on the walkthrough slip-resistant platform.



**Freedom to move.** The RT650's tight turning radius, with steerable rear planetary axle, provides excellent maneuverability in confined work areas.

## RT650 Specifications

### General

Weight (with tractor, backfill blade and 31" tires): 6600 lb (2994 kg)  
 Length (with backfill blade): 121" (307 cm)  
 Width: 69" (175 cm)  
 Height (with roll bar and 31" tires): 99" (251 cm)  
 Wheel base: 58" (147 cm)  
 Tread width: 53.5" (136 cm)  
 Ground clearance (with 31" tires): 8" (20 cm)

### Capacities

Fuel tank: 23 gal (87 L)  
 Hydraulic tank: 19 gal (72 L)

### Engine

Make and model: Deutz BF4L2011  
 Horsepower @ 2800 rpm (gross): 76 hp (56 kw)  
 Horsepower @ 2800 rpm (net): 69 hp (51 kw)  
 Displacement: 189.7 cu in (3108 cu-cm)  
 Number of cylinders: 4  
 Cooling medium: Oil  
 Air cleaner: Dry type w/ safety element

### Hydraulics

Auxiliary gpm @ 2800 rpm: 12.5 gpm (47 L/min)  
 Auxiliary pump relief: 2500 psi (172 bar)

### Ground Drive

Ground drive type: Hydrostatic  
 Creep override: Yes  
 Forward/reverse foot pedal control: Standard  
 Tires considered with travel speed: 35 x 19 x 16  
 2-speed standard gearbox maximum travel speed (high range): 7 mph (11 km/h)  
 (low range): 2 mph (3 km/h)  
 2-speed optional gearbox maximum travel speed (high range): 4.6 mph (7.4 km/h)  
 (low range): 1.4 mph (2.3 km/h)

### Axle

Front and rear type: Dana Sige 220 Planetary  
 Differential (front and rear): Limited SLTP  
 Turning radius (front steer, w/ 31" tires): 31.3' (9.5 m)  
 Turning radius (front & rear steer, w/ 31" tires): 18.7' (5.7 m)

### Trencher Boom

Trencher depth range: 0" - 60" (0 cm - 152 cm)  
 Trencher width range: 6" - 16" (15 cm - 41 cm)

### Brakes

Service: Hydrostatic  
 Parking: Spring applied, hydraulic release dry disk

### Backfill Blade

Width: 72" (183 cm)  
 Height: 14" (36 cm)  
 Extension beyond tire (full angle): 9.3" (23.6 cm)

### Backhoe Operation

Backhoe: B600A  
 Bucket width option #1: 12" (30 cm)  
 Bucket width option #2: 16" (46 cm)  
 Bucket width option #3: 24" (61 cm)  
 Maximum digging depth: 89.7" (228 cm)  
 Swing arc: 180°  
 Reach: 159" (404 cm)  
 Standard remotes: Remote creep, engine start/stop, throttle, blade

### Combo Trencher/Plow

Trench depth: 48" (122 cm)  
 Trench width: 12" (30 cm)  
 Plow depth: 24" (61 cm)

### Plow

Depth: 30" (76 cm)  
 Swing angle: 38 degrees

### Reel Carrier

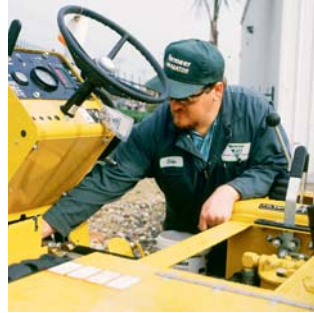
Lift capacity: 1500 lb (680 kg)  
 Maximum reel diameter: 56" (142 cm)  
 Maximum reel width: 35" (89 cm)



# Quality Parts and Service.



*Get the parts and service edge. In addition to providing quality equipment, Vermeer delivers top-quality parts and superior services. Vermeer parts are manufactured to exacting specifications to help keep your Vermeer equipment running trouble-free and at OEM specifications.*



*Vermeer offers factory-certified training programs to its dealer network to ensure that the most current service procedures are presented to the service personnel of your Vermeer dealer.*



*Genuine Vermeer parts are precision crafted to match to your Vermeer equipment EXACTLY. This ensures that your system will run as smoothly as possible, with the least amount of service and maintenance.*

# Vermeer®

## **Vermeer Manufacturing Company**

1210 Vermeer Road East  
P.O. Box 200

Pella, Iowa 50219 U.S.A.

Phone: (641) 628-3141

Fax: (641) 621-7734

International fax: +1 (641) 621-7730

[www.vermeer.com](http://www.vermeer.com)

## **Call toll-free 1-888-VERMEER**

1-888-837-6337 (U.S.A. only)

## **Europe, Middle East and Africa:**

P.O. Box 323

4460 AS Goes

Netherlands

Phone: +31 113 272700

Fax: +31 113 272727

Equipment shown is for illustrative purposes only and may display optional accessories or components. Please contact your local Vermeer dealer for more information about machine specifications. Vermeer Manufacturing Company reserves the right to make changes in engineering, design, and specifications; add improvements; or discontinue manufacturing at any time without notice or obligation. VERMEER and VERMEER LOGO are registered trademarks of Vermeer Manufacturing Company in the U.S. and/or other countries. Deutz is a trademark of Kockner-Humboldt-Deutz.

Copyright © 2005 Vermeer Manufacturing Company. All Rights Reserved